



Isaiah, *Maybe It's You*

by **XAVIER DAMASE** | 2022

STONE

&

LOOK

It is with great enthusiasm that I present the Tone & Look Moodboard for the film "ISAIAH, MAYBE IT'S YOU."

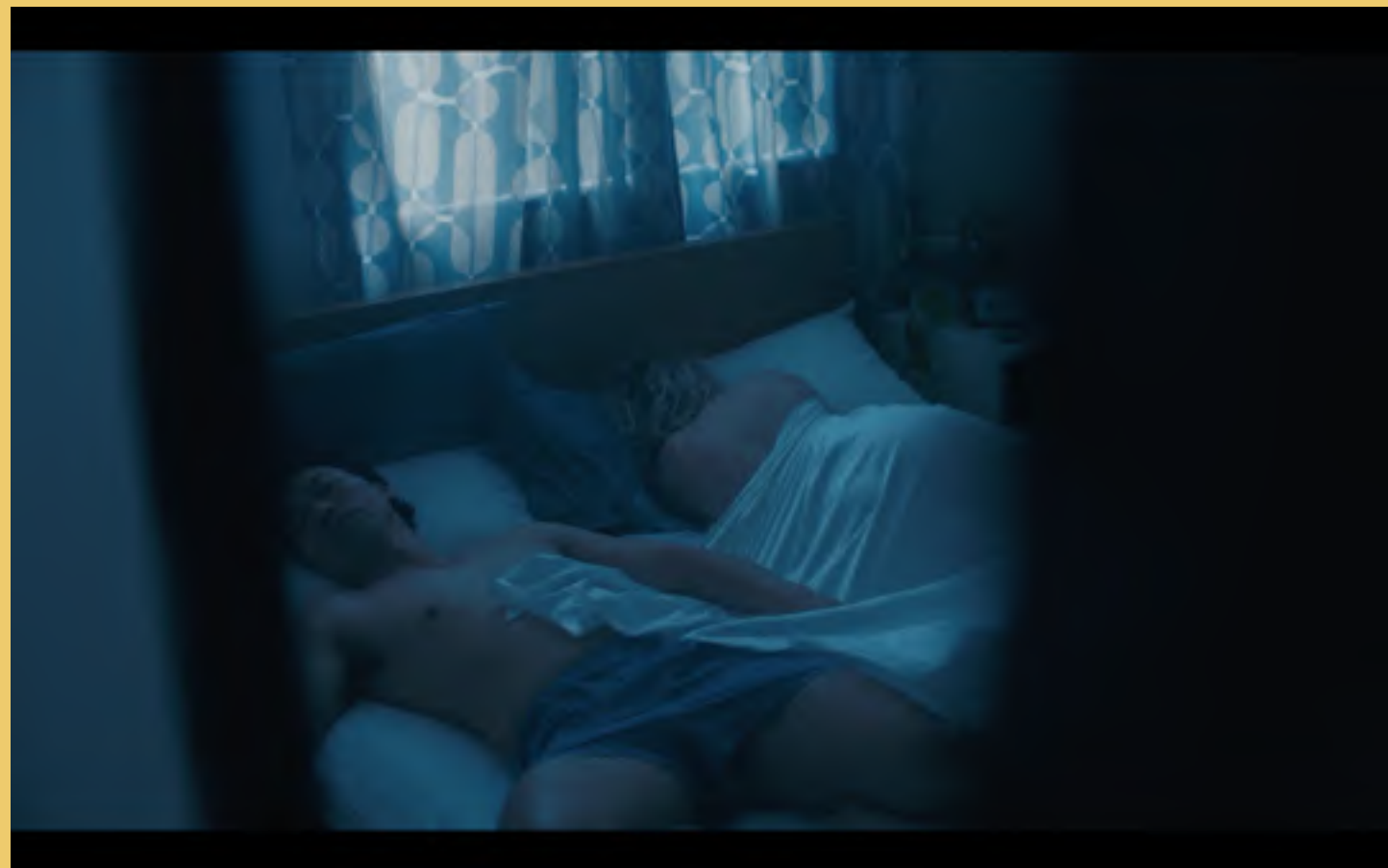
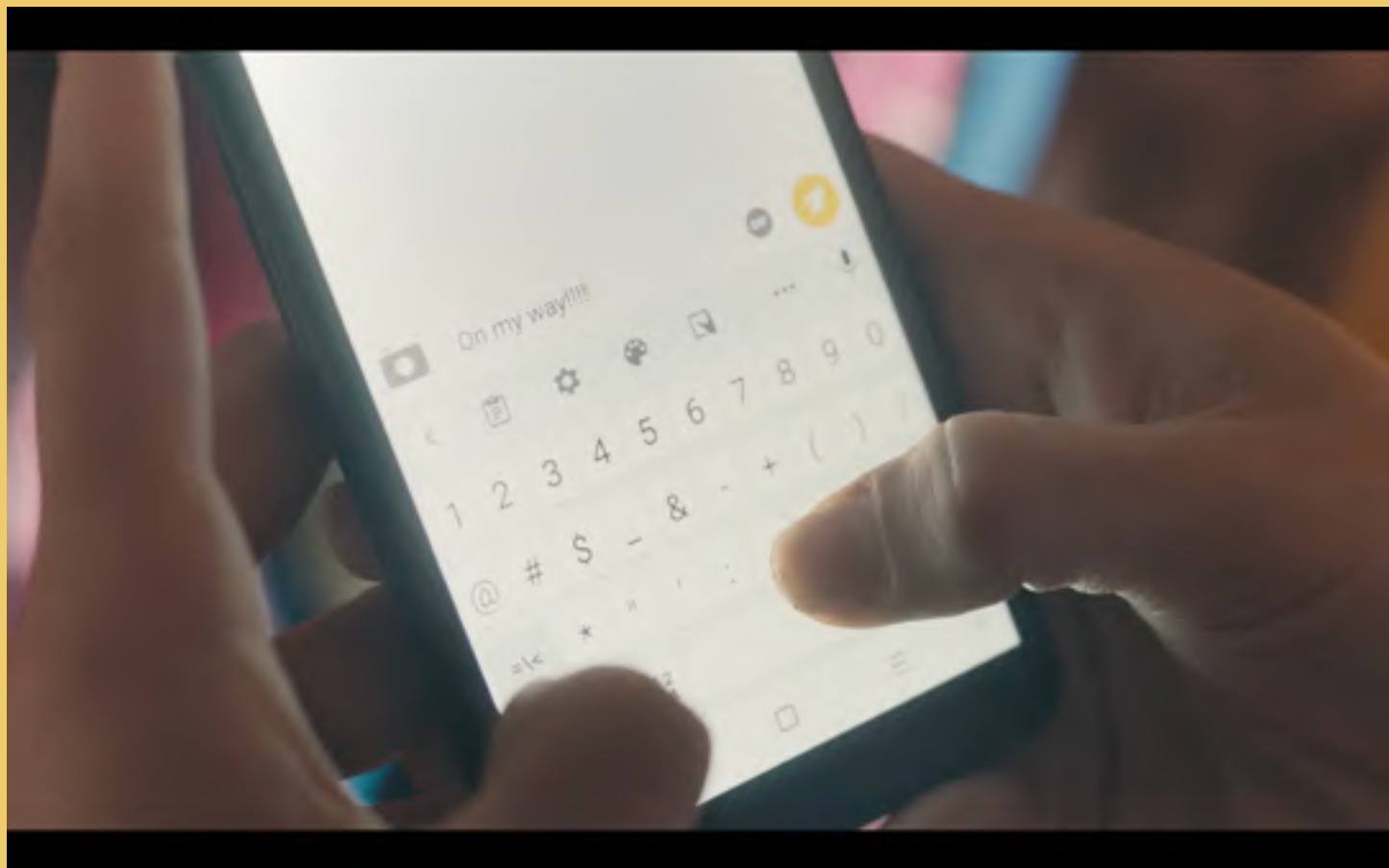
We want our film to look and feel cinematic without shooting on film. First, we'll need to shoot on a full frame sensor such as the Alexa's. This camera would also provide us with a deep dynamic range / color palette that'll make every second of every frame feel real and vibrant.

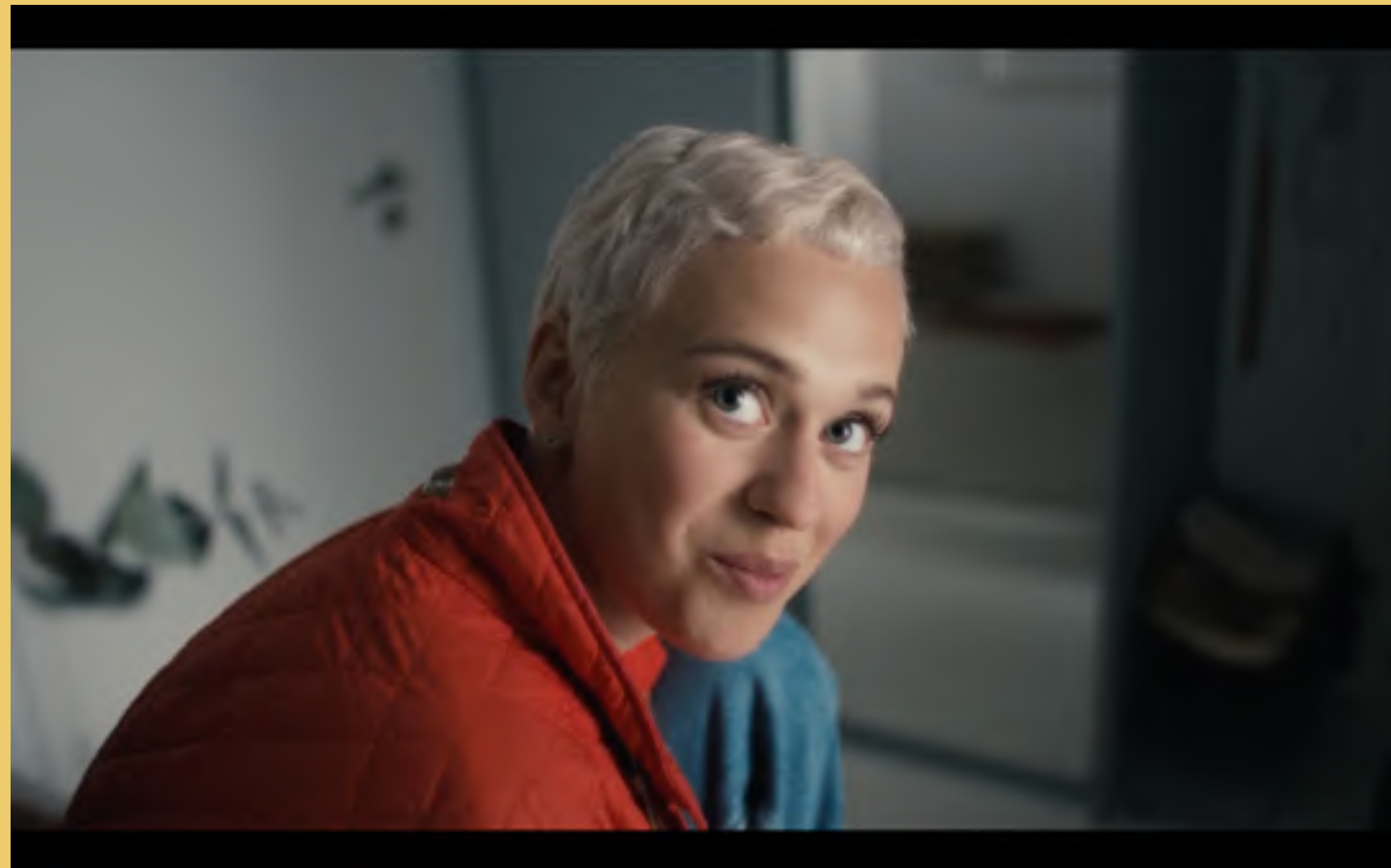
Depending on the set of lenses we choose we might utilize a pro mist filter to diffuse and soften the look of sharp digital, further bridging the gap between film and digital.

Most of the scenes take place at night and in interiors. So we'll be able to tailor each set up to feel stylized within in a realistic lense. This is fiction after all, so let's light each set up to reflect the mood and tone of the scene.

Modern life in the digital age.

ASPECT 16:9







**Our private life
as
entertainment
for the masses.**

ISAIAH, MAYBE IT'S YOU | 2022

XAVIER DAMASE

LOCATIONS & SET UPS

KITCHEN

MUST: There must be a washer and dryer within the kitchen.

Isaiah eats at a kitchen counter or table. She disposes of her plate in the bin and opens the washing machine -- the two must be within arm's reach.

Allan walks in and washes his hands, grabs a plate of left over in the fridge then has an argument with Isaiah. We'll be shooting this sequence with wides, over the shoulders, SINGLE MED WIDES, MEDS and CLOSE.

BATHROOM

MUST: Be large enough so we can shoot a wide of Isaiah sitting on the toilet.

Isaiah washes her face, removing earrings, make up. She sits on the toilet and pees. There's a POV from the toilet, so will need a toilet seat so we can recreate the shot without putting the camera in the bowl.

BEDROOM

MUST: At least two windows and an ensuite bathroom.

Two scenes here, one we're shooting at night with Allan and Isaiah on the bed. We're also shooting the next morning -- so natural light.

PODCAST

MUST: Have have a camera set up already there and ready. That's why the Style And City Podcast studio would be ideal. Missing headphones tho.

We might have to add textured drapes and a few plants. The setup here is quite straight forward at the beginning -- it's a podcast set up. Five cameras, three Singles, one Two Shot and one Wide.

Then, as Isaiah has a breakdown, we stylize the way we film the scene, the lighting will dim as she goes on and on intermidably. Without noticing, we're a few stops open now, with a softly out of focus background as we focus on Isaiah's speech.

LENSES

Spherical lenses. Interested in:

ARRI ZEISS MASTER PRIMES

PANAVISION 65 VINTAGE

Prime Lenses:

100mm

65mm or 50mm

35mm

24mm

18mm

Thank You!!